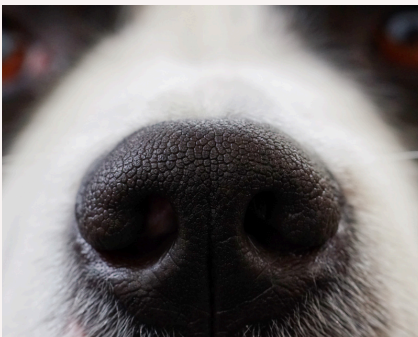




# GRASS SEED SIGNS & SYMPTOMS

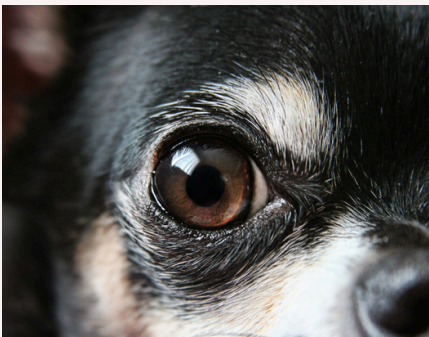
and the damage it can cause



1

## NOSE

Watch out for nasal discharge, continuous sneezing, rubbing of the face or breathing difficulties. Grass seeds in airways can cause damage and even become life threatening if it moves to the lungs.



2

## EYES

Signs include swollen eye, inflamed and red or watery. Ulcers can appear and long term effects may lead to blindness and eye removal.



3

## EARS

Dogs may hold their heads to one side, scratch their ears, shake the head or have it at a tilted angle. If not removed, it could lead to infections, ear rupturing leading to deafness and imbalance or eventually death.



4

## SKIN

Look out for the dog trying to remove the grass seed by licking and chewing a specific area which could appear raw or with pus and blood. If the seed moves further into the body surgery might have to remove it.



5

## FEET

Look for swelling, redness and a weeping hole. The dog may lick the infected area or walk with a limp. Seeds can travel up to leg to joints.



6

## STOMACH & LUNGS

Dogs can ingest and inhale grass seeds in a variety of ways. Signs include coughing or retching. Infections can lead to pneumonia or collapsed lung and if diagnosed late can be fatal.

ONLINE VETCARE